

1

01
Description

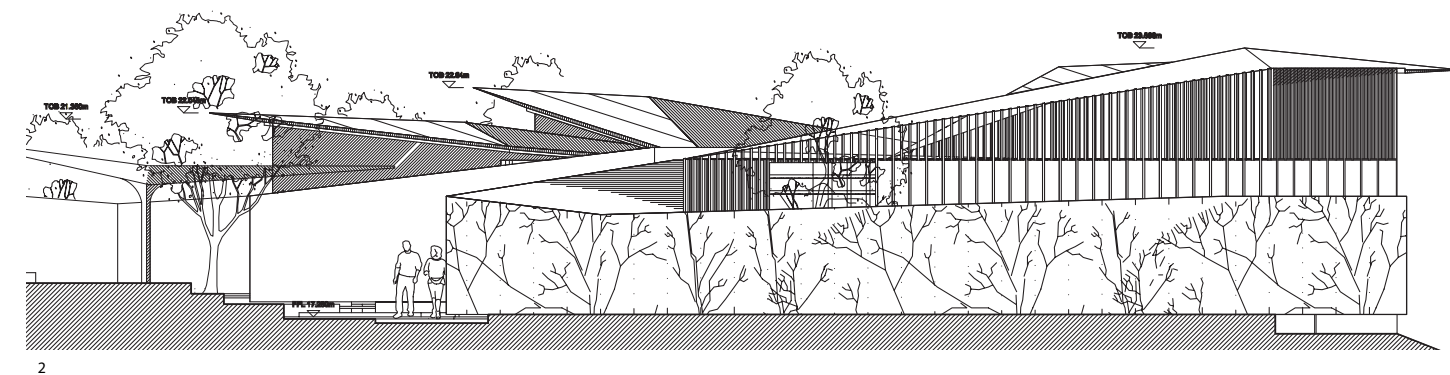
The project adjacent to the Beauvallon Hotel consists of 16 units connected with a communal pool on the upper level and a corridor on the ground level.

Bedrooms and living areas are arranged around an internal courtyard and internal pool. Stairs slice through the bedroom component to provide expansive views to the sky with access to an elevated terrace.

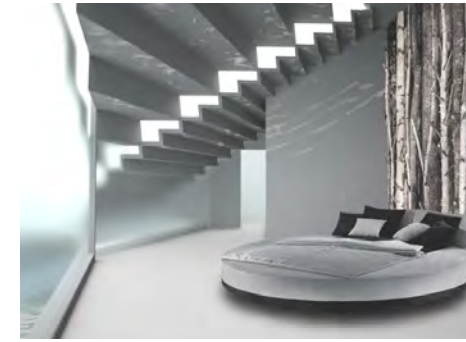
Based on a North African model developed and tested over centuries, the section uses a central courtyard to cool and distribute fresh air.

A pool of water at the heart of the building evaporates in the heat of summer generating cool water vapour which is pulled through the living and sleeping spaces by the external perimeter warm courts.

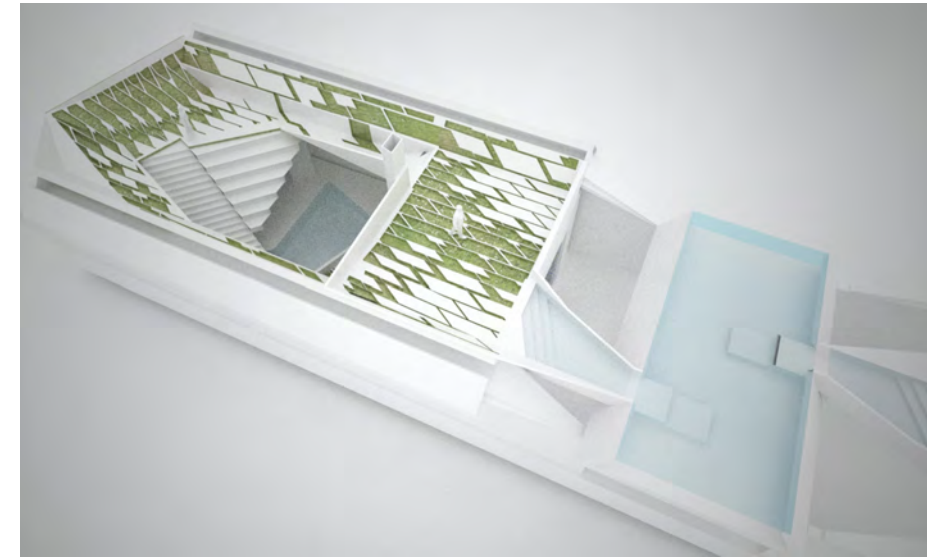
In mid seasonal climates the lower sun is allowed into the internal courts above carefully profiled side walls to warm the interior.



2



5



6



7

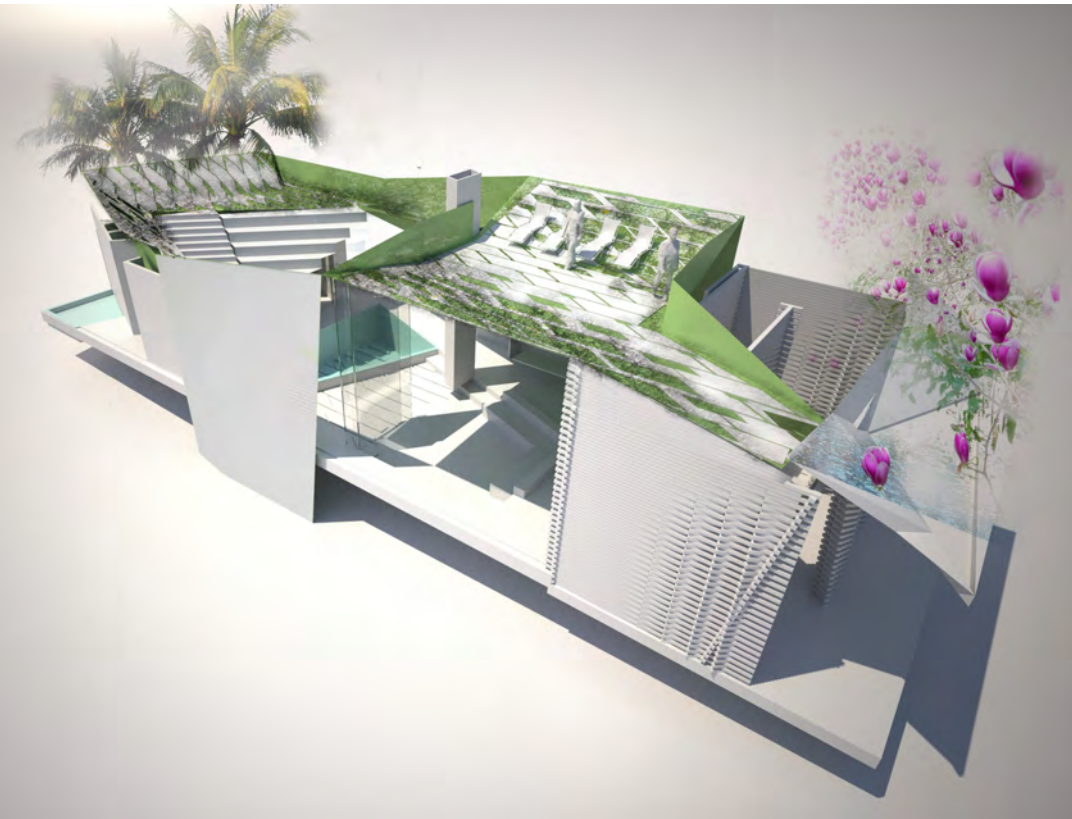
Client: Parkview International
Date: 2009
Status: Planning
Value: £7m

Illustrations

- 5/ Suite master bedroom
- 6/ Individual suite
- 7/ Ground floor part plan
- 8/ Sectional elevation showing the relationship with the existing hotel and landscape

Illustrations

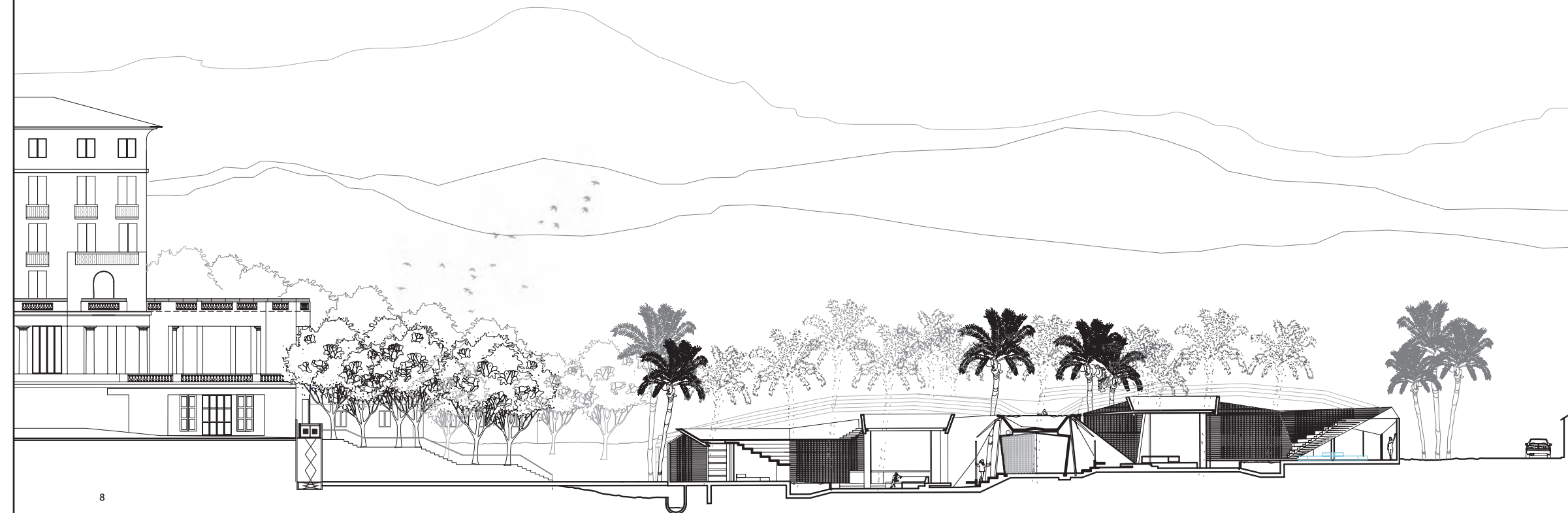
- 1/ Concept massing model
- 2/ Elevation showing roof profiling
- 3/ Model of an individual suite
- 4/ Aerial perspective of proposed spa complex



3



4



8