

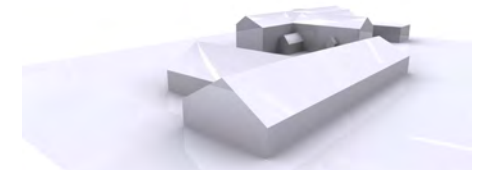
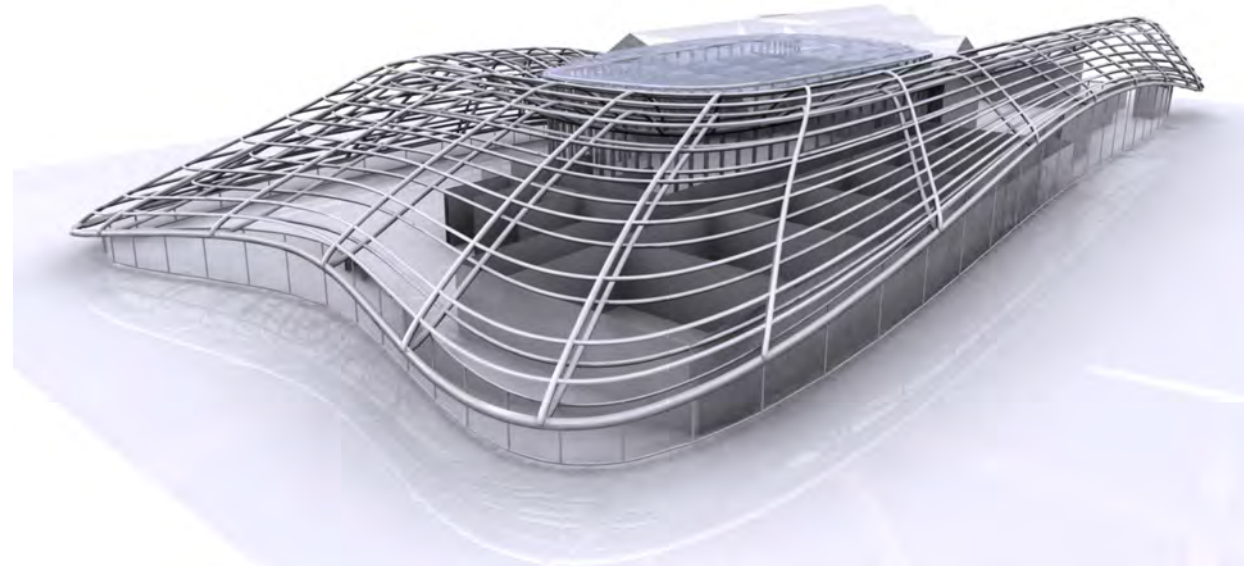
031.0/ Broadclyst School

01 Description

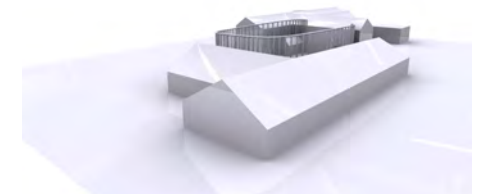
Our experience with Broadclyst Community School has taught us how to devise a framework to an existing school with the addition of a few key interventions.

The key for this school was to discover the heart of the site around which the rest of the school was orientated and flowed.

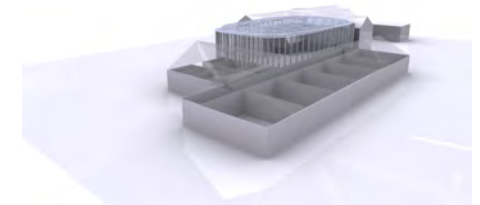
The school is unified beneath a single envelope within the context of a National Trust site. Its flowing form combines local craft and advanced technology - Timber construction + ETFE roof + thatch roof; helping to promote local heritage skills and create new jobs.



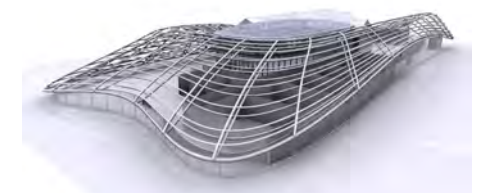
1



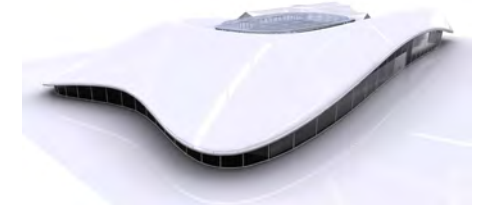
2



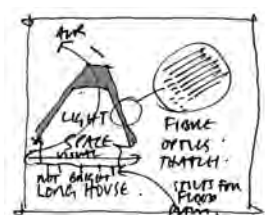
3



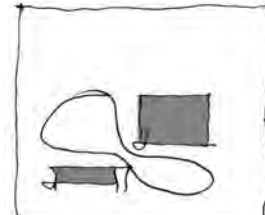
4



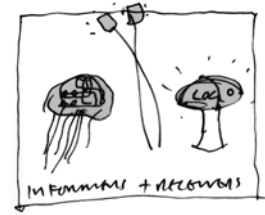
5



Environment



Extension



Informers



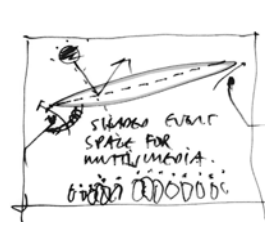
Proposed



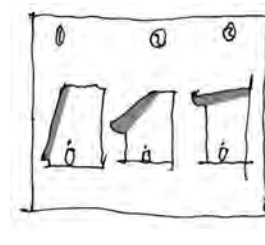
Event



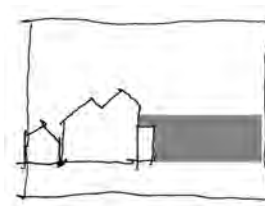
GPS



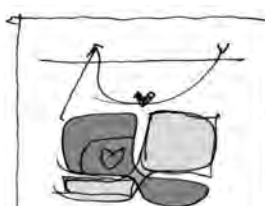
Multimedia



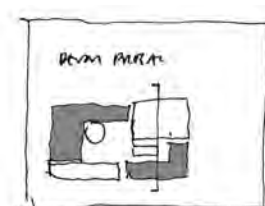
Roof sections



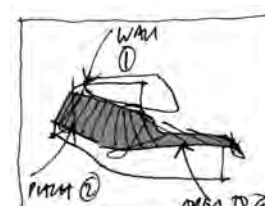
Existing



Heart



Plan



Roof

Illustrations

- 1/ Existing buildings reviewed and integrated
- 2/ A new hub - A flexible space for assembly, performance and interaction
- 3/ A new heart - A covered space as focusing element
- 4/ Enclosing structure - Wraps the existing and new as one
- 5/ Low tech envelope - Application of relevant materials creates an inspiring learning environment