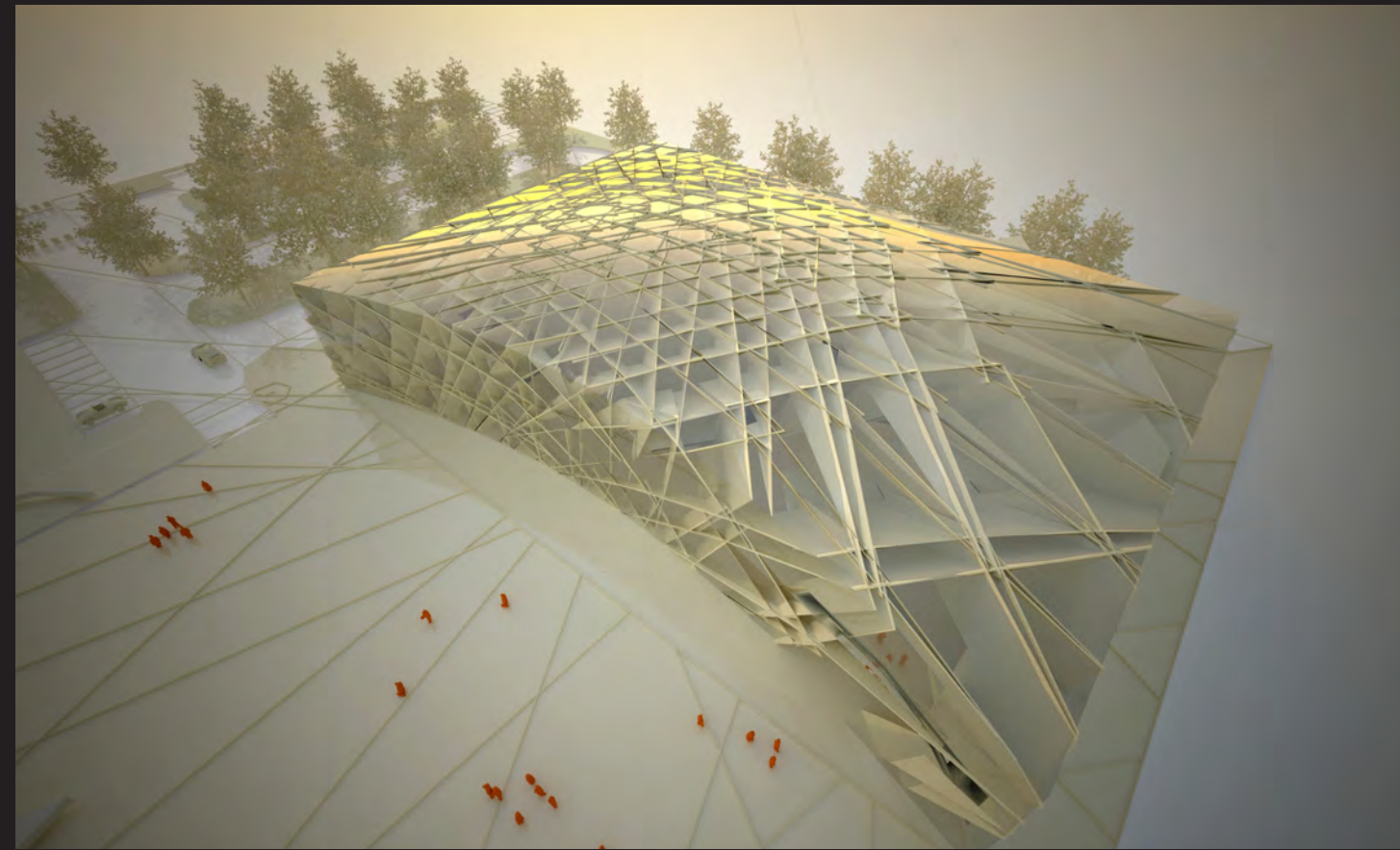
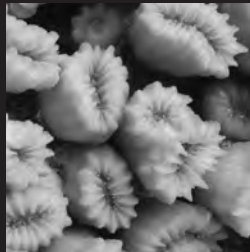
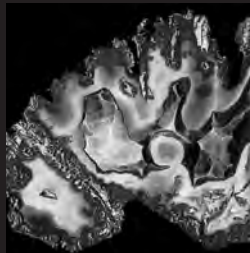
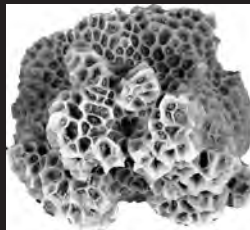


Client: NICE Group  
Date: April 2007  
Status: Feasibility stage  
Value: £150k per unit

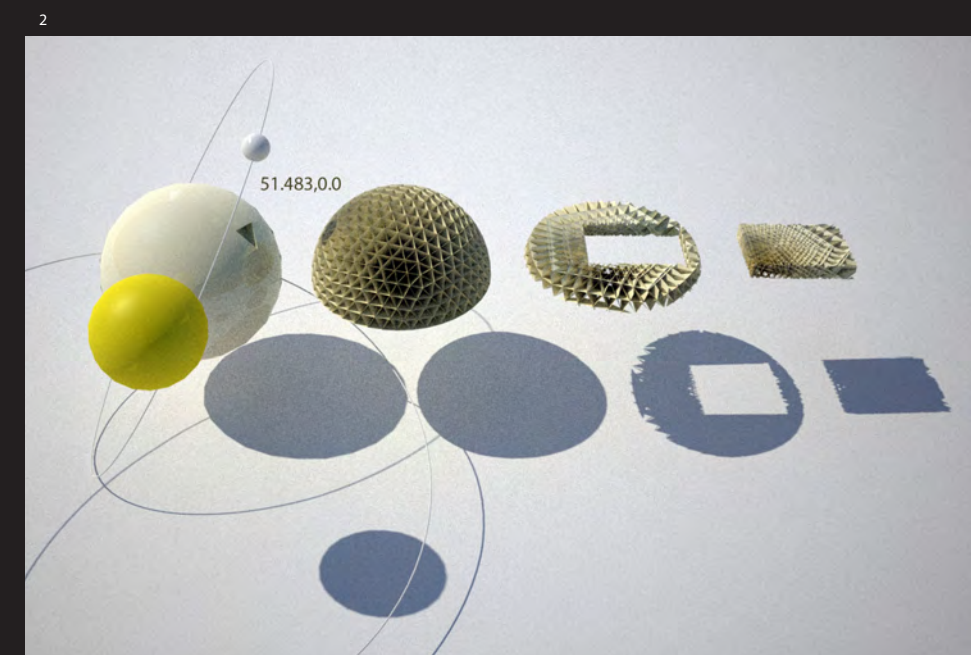
World Dive Centres is pioneering the development of a series of luxury destination entertainment centres around the world that offer a range of adventure activities coupled with aspirational lifestyle, retail, food, beverage and other complimentary services.

The first centre has been under development for the last eighteen months and will be located in North West London - in a particular area known as the 'Golden Triangle'.

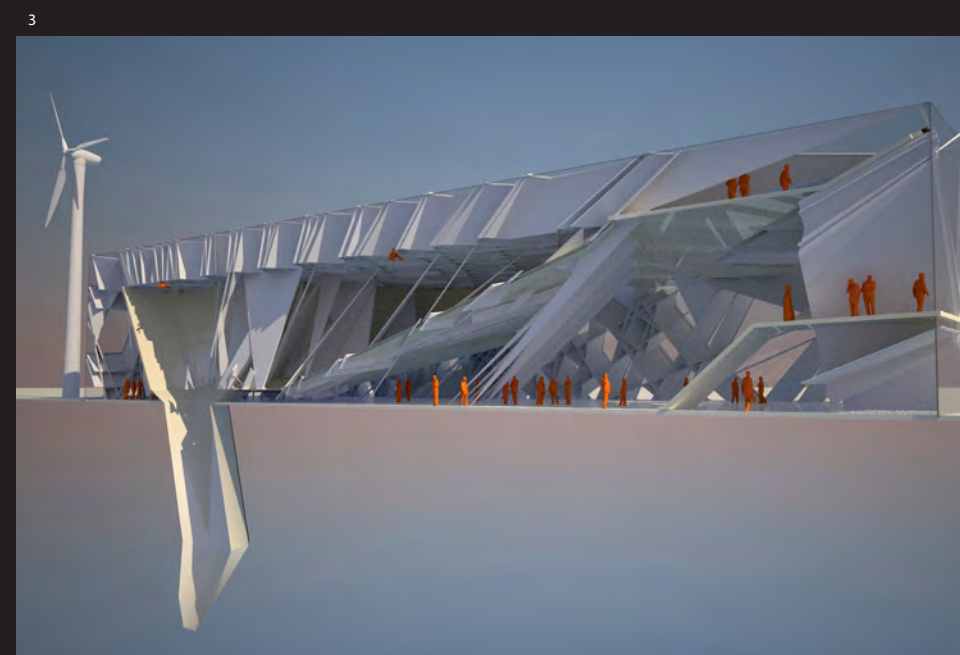
As part of a 100-acre redevelopment, World Dive Centres will provide the anchor attraction and underpin the regeneration and rejuvenation of this area of south east England.



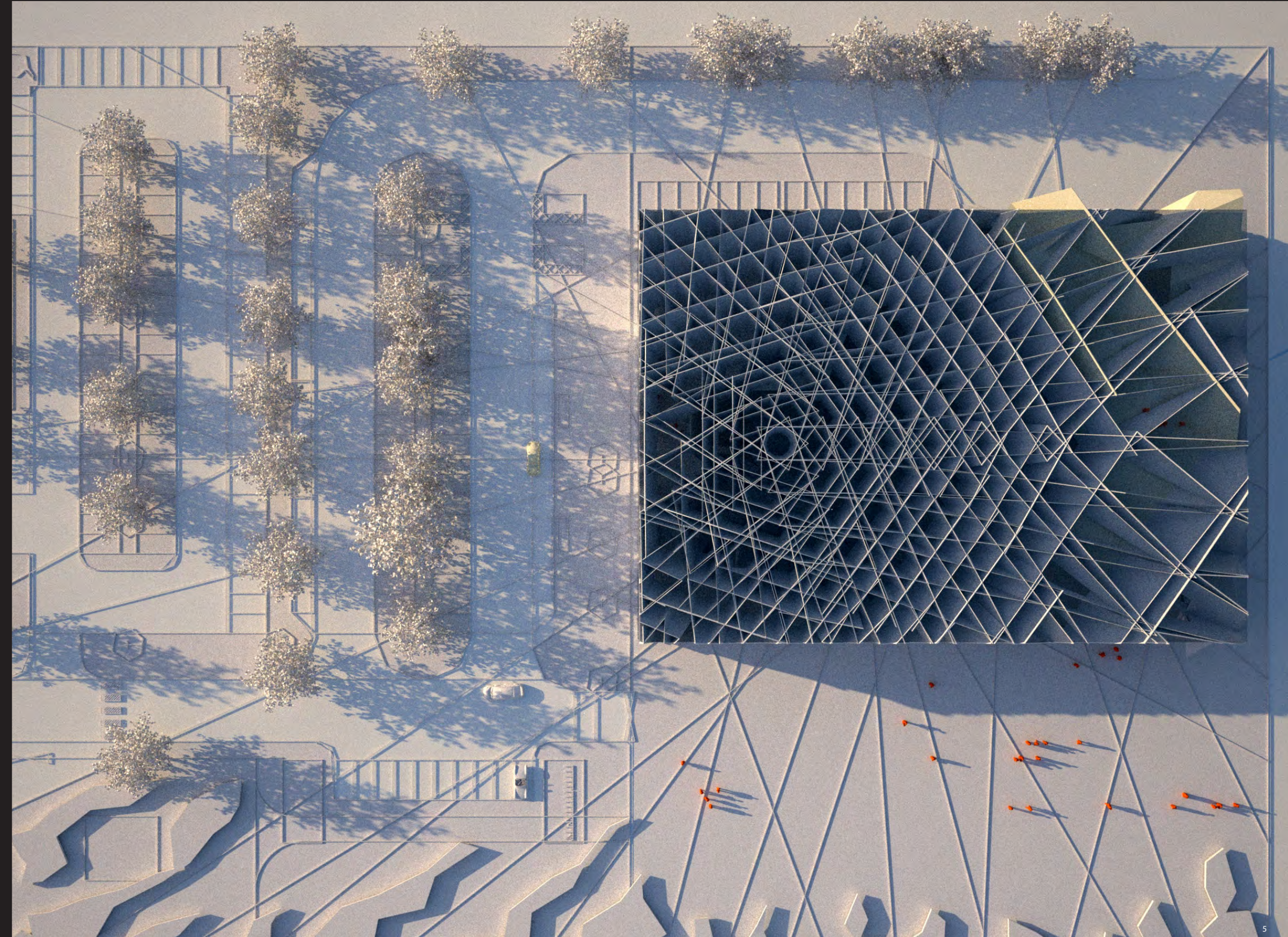
1



2



3



5

- Illustrations
- 1/ Aerial perspective
  - 2/ Derivation of geometry for structural organising system
  - 3/ Section showing the deep water diving area
  - 4/ Site masterplan