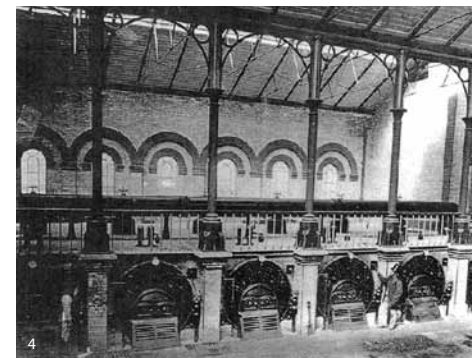
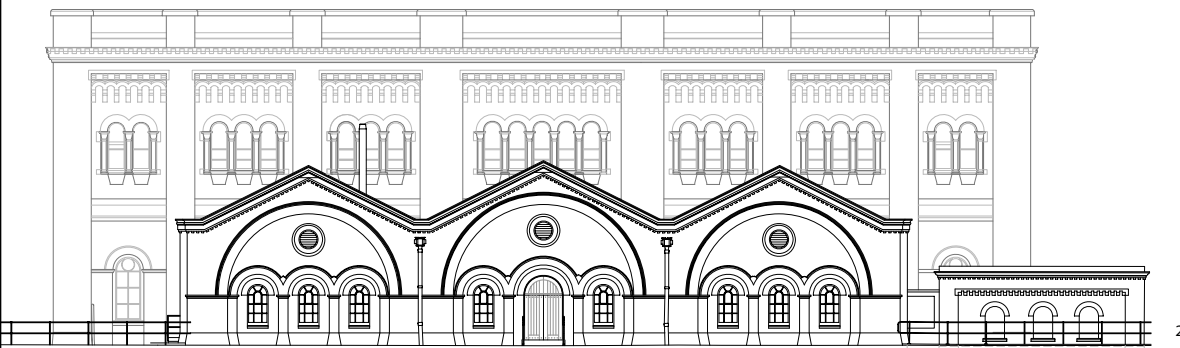
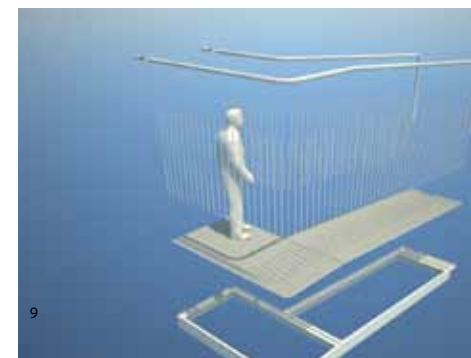
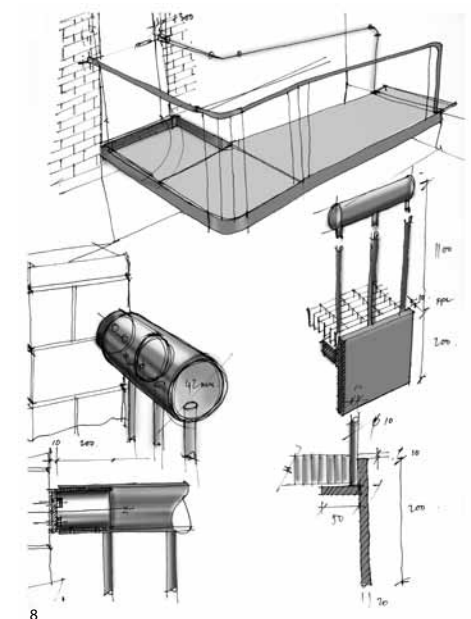
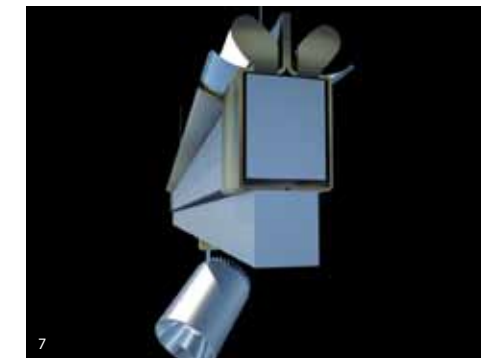
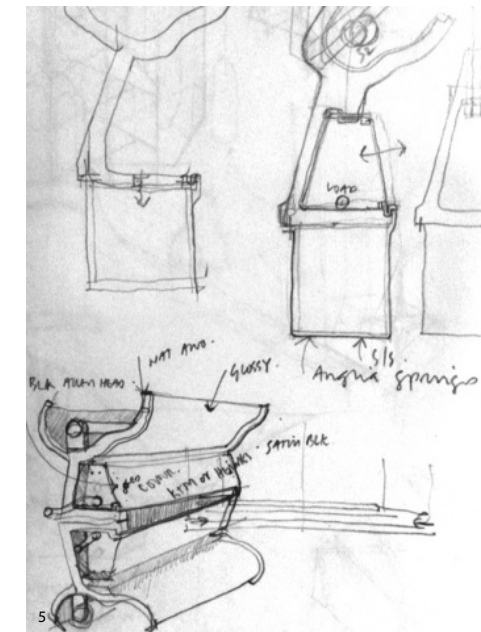


Restoration and visitor improvement facilities for this Grade 1 listed Victorian pumping station in south east London. The resulting work will form part of the Museum of Sanitation Engineering, celebrating the tremendous achievements of Victorian innovation in engineering. The client, The Crossness Engines Trust, is a registered charity, formed in 1987 to undertake voluntary restoration work.

The project is an exercise in working with historic buildings and providing sensitive and cost effective contemporary interventions.



// "A masterpiece of engineering – a Victorian cathedral of ironwork"
Nikolaus Pevsner //



- Illustrations
- 1/ East elevation
 - 2/ South elevation
 - 3/ 1864 photograph
 - 4/ Interior view of the Boiler house 1860's
 - 5/ Bespoke lighting details
 - 6/ Universal access solutions

Designed by engineer Sir Joseph Bazalgette and architect Charles Henry Driver, the pumping station was built between 1859 and 1865 in response to the 'Big Stink' due to the inadequacies of London's sanitation system.

Parliament passed the Metropolitan Management Act in 1855 which created the Metropolitan Board of Works. A notable achievement of the Board was the creation of the core London sewerage system, including 75 miles (120 km) of main and 1000 miles (1650 km) of street sewers, which solved the problem. A large part of the work of the MBW was under the charge of the Chief Engineer, Joseph Bazalgette, previously engineer with the Metropolitan Commission of Sewers.

When planning the sewer network, Bazalgette took the densest population, gave every person the most generous allowance of sewage production and came up with a diameter of pipe needed. He then said 'Well, we're only going to do this once and there's always the unforeseen,' and doubled the diameter to be used. As it is they are still in use to this day.

Source - http://en.wikipedia.org/wiki/Joseph_Bazalgette

Illustrations

- 11/ New offices, reception desk and entrance lobby installations
- 12/ The Engine House interior 1865
- 13/ The Engine House exterior 1865
- 14/ Main entrance 1865
- 15/ Boiler house perspective showing new installations

